



Madagascar N.G.O. Media & Journalism Internship

Take significant steps towards your dream journalistic career on a unique internship with an exciting media position in Madagascar.



Madagascar's dramatic forest landscape is home to a fascinating diversity of life, with aloe trees, lemurs, chameleons and a whole host of other species that are found nowhere else on earth! Its fantastically beautiful coastline boasts coral reefs rich in marine species, perfect for diving and snorkeling, and silky sanded beaches ideal for soaking up the bountiful sunshine. Madagascar's culture is vibrant and diverse; you will find bustling markets full of multicoloured produce and hospitable locals shouting their wares.

Your journalism placement will give you the opportunity to work as a field journalist, integrating yourself with day to day activities and reporting or documenting the work and social activities of volunteers at the location.

You may undertake this placement from a variety of perspectives depending on your skills and experience. These include:

- Article production (written and online journalism)
- Photography
- Videography
- Blogging or vlogging

You will gain experience of reporting and content production in a remote location and this placement is a perfect entry into the world of travel journalism.

Acceptance on this placement is dependent on submission of an up to date CV/resume detailing relevant experience and/or qualifications.

PROJECT HIGHLIGHTS

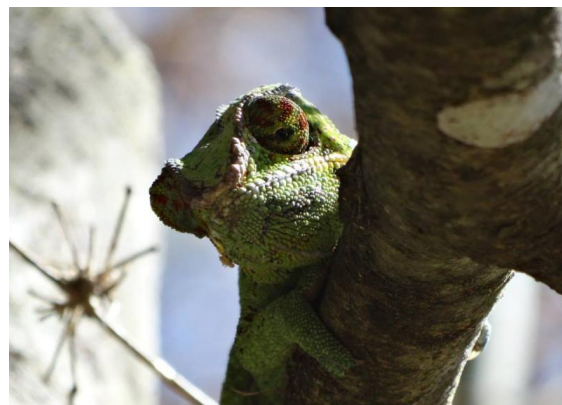
- Immerse yourself in true Malagasy culture
- Live on the idyllic beach camp
- Gain valuable professional travel journalism experience and a reference
- Make lifelong friends

PROJECT REQUIREMENTS

- CV required
- Relevant academic qualifications required
- Proof of work experience
- Minimum 2 month placement
- Laptop and/or camera/video camera that you are able to take to the project

FAST FACTS

Location	Madagascar
Activities	Journalism Photography Graphic design Web design
Transport	Airport pickup weekly on a Monday. Alternative start dates possible, additional £35 applies for pickup, please speak to an adviser
Accommodation	Volunteer house & communal beach camp



WHAT DOES THE PROJECT DO?

Online Journalism

Report on the activities of volunteers and staff on the project. Think outside the box to offer a unique

and informative outlook on this fascinating project using your writing skills. You will produce a number of written articles each week and liaise with volunteers and staff to create content such as interviews and activity logs.

Photography

Use your photography skills to showcase this amazing project to the world. Create regular photo galleries and work with the volunteers and staff to document their activities on camp and in the local community.

Videography

Film and produce videos documenting the work and social life on your project. Liaise with volunteers and staff to create video interviews and showcase the most interesting aspects of life on the project.

Blogging/Vlogging

If blogging or vlogging is your thing, you will be tasked with creating regular updates on work and life on the project, helping connect people to the project worldwide.

WHAT WILL I BE DOING?

Depending on your skills, you will be given specific targets and suggestions for content production and will liaise with volunteers and field staff as well as journalism and marketing staff at our HQ to create amazing content. This content will be used to showcase the great work being done on the projects, as well as your skill and commitment as a journalist.

You will be given support from field and HQ staff but will also be encouraged to use your imagination and ingenuity to suggest new and interesting ways to document your time as a field journalist.



WHAT HAPPENS WHEN I ARRIVE?

Volunteers arriving weekly on a Monday will be welcomed by a Frontier representative at Nosy Be airport. From here it's a short taxi or minibus ride from the airport to the centre of the vibrant town of Hellville. If you arrive before noon, you will transfer to your project site and be introduced to the Frontier-Madagascar programme on the same day. If you arrive later in the day, you will stay overnight at the Frontier volunteer house in town and transfer to your project site the following day.

On arrival at camp, you will meet the staff, receive some initial briefings, including an introduction to the science programme and techniques used, as well as health and safety lectures, so make sure your medical kit is complete and start reading your safety and medical briefs. The transfer from Nosy

Be to the Frontier camp is by small, wooden boats and depending on the weather both you and your kit will get wet so make sure you have sufficient dry bags to waterproof all your belongings and something to waterproof yourself!

You will be transferred back to the town of Nosy Be at the end of your project from where you can reach the airport or start your onward independent travel.

Independent travellers arriving on dates other than weekly on a Monday can arrange a separate airport collection at an extra cost of £35 by contacting the camp staff.

WHERE WILL I BE STAYING?

During the project you'll live in the beach camp in the village of Ambalahonko on the island of Nosy Be alongside other Frontier volunteers and staff. We aim to provide you with a unique and memorable living experience. The Frontier camp was constructed by Frontier volunteers working with local craftsmen, using traditional building techniques and locally sourced environment-friendly, building materials. The camp, which is situated in a clearing on the beach, has been designed to blend harmoniously with the surrounding landscape. Camp life is very simple, unsophisticated and fun.

You will be staying in simple communal local style dwellings, known as "bandas", your "shower" will be a jug or a bucket of water and you cook over an open campfire, so prepare for the basic, virtually footprint less, unencumbered lifestyle! When you are trekking away from the base camp you may stay on a "satellite camp" which may consist of a mosquito net pitched in a remote clearing. You will also help run camp from day-to-day, taking turns to collect firewood, purify water, and undertake other essential camp maintenance duties.

WHAT WILL I BE EATING?

Food on camp is simple and nutritious and consists largely of locally sourced fresh vegetables and fruit, rice, beans and noodles, all of which are purchased from nearby communities, thereby helping to support the local economy. Luxuries such as chocolate, peanut butter and drinking chocolate are only available in the main town, so make sure you stock up before heading to your field camp.

Part of your role on camp will be to help with the cooking. Creating spectacular meals over an open campfire or baking bread in the campfire oven will become second nature, so get your cookbooks out now and start thinking up recipes! The local villagers sell homemade delicacies every day just outside camp, including banana macari, fresh bread, meat and veggie sambos. You may also be invited to local feasts and festivals – a great way to meet locals and enjoy local culture. On certain days the village women prepare local style meals which are offered to Frontier volunteers for a small extra cost.



COSTS

8 weeks	£ 1,519
12 weeks	£ 2,149
20 weeks	£ 3,200
extra week	£ 180

DEPARTURE DATES

Every Monday throughout the year

Ideally flights to Madagascar and connections to Nosy Be (Fascene) should be arranged for this arrival date.

DURATION

You can join this project for a minimum of 2 months

This project is available throughout the Christmas period

WHAT'S INCLUDED

Before you go

- Pre-departure support & documentation
- Travel & medical advice & documentation
- Equipment advice
- Discounted medical kit
- Free Frontier t-shirt
- UK residential briefing weekend including food, accommodation and training (extra cost applies)

In-country

- Airport pickup weekly on a Monday. Alternative start date possible, additional £35 applies for pickup, please speak to an adviser
- Food

- Accommodation
- Internal ground transfers & in-transit accommodation weekly on a Monday. Alternative start dates possible
- Local orientation & training
- In-country emergency support
- 24-hour international HQ back-up

AIRPORT INFORMATION

Nearest airport(s): Nossi-Be (NOS)

CONTACT INFORMATION

Call us on 020 7613 2422 (UK) / 1 949 336 8178 (US)

Mail us on info@frontier.ac.uk

Check out our social media here:



Project details were correct at the time this document was generated. Price, dates and other details are subject to change. Please see our website for current details for this project.